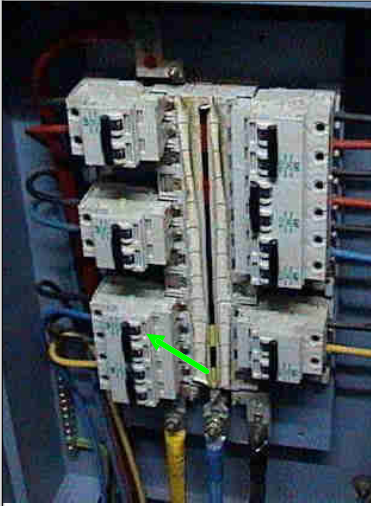


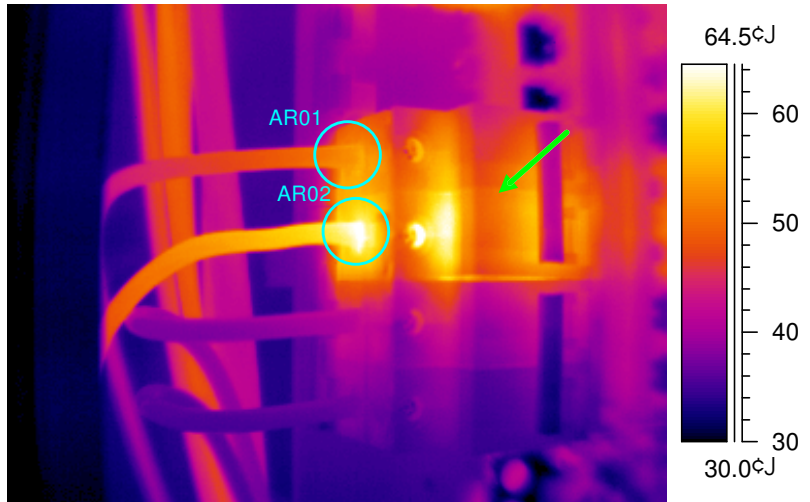
## Findings Review - 200A 12 Way MCB

The following component appear abnormal temperature readings :

Visual Image



Infrared Image



IR information	Value
Date of creation	2003/1/29
Time of creation	02:29:59 PM

Results	
Label	Value
AR01 : max	56.1 °C
AR02 : max	65.8 °C

### Comments :

Comments on here.

### Priority :

- Treat as URGENT
- Repair on next scheduled stoppage
- Open the cover and inspect again with Thermal Camera